



# Configuring ConsoleWorks to Use xterm

## CONSOLEWORKS AND XTERM

ConsoleWorks has a built-in Java™ terminal emulator for connecting to Consoles, but it can also use the standard terminal emulator for the X Window System (xterm).

This document describes the steps for configuring ConsoleWorks to use xterm on the UNIX® platform:

1. Install the client application, called CWCLient.
2. Configure the ConsoleWorks server connection.
3. Configure the browser to use xterm.

**Note:** For information about using a third-party terminal emulator on client workstations running Microsoft® Windows®, refer to the TDi wiki article, [Using Third-Party Emulators with ConsoleWorks 4](#).

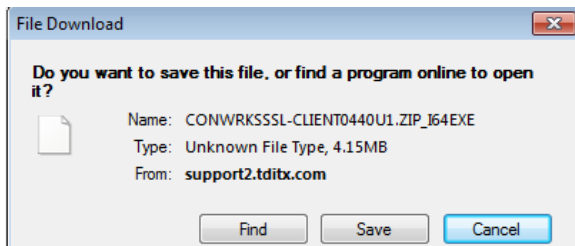
## INSTALLING CWCLIENT

If the workstation where you'll run xterm is the ConsoleWorks server, then CWCLient is already installed as part of the default ConsoleWorks server installation. If your workstation is not the ConsoleWorks server, perform the following steps on your workstation.

### To install CWCLient

1. In your browser, open <http://support.tditechnologies.com/client-kits> (or open [www.tditechnologies.com](http://www.tditechnologies.com), click on the **Support** link at the bottom of the page, and then click on the **Client Kits** link at the bottom of that page).
2. Click the link for your version of ConsoleWorks.
3. Locate the section for your operating system and click the link for CWCLient.
4. If you are not logged in, you must enter your TDi Technologies username and password in the Authentication Required box that appears.

*The File Download box appears.*



5. Click **Save** and install CWCLient.

**Note:** For complete details about installing and using CWCLient, refer to the *CWCLient User's Guide*, available on the client kit download page (see [step 3](#)) and on the CWCLient page in ConsoleWorks.

## CONFIGURING SERVER CONNECTIONS

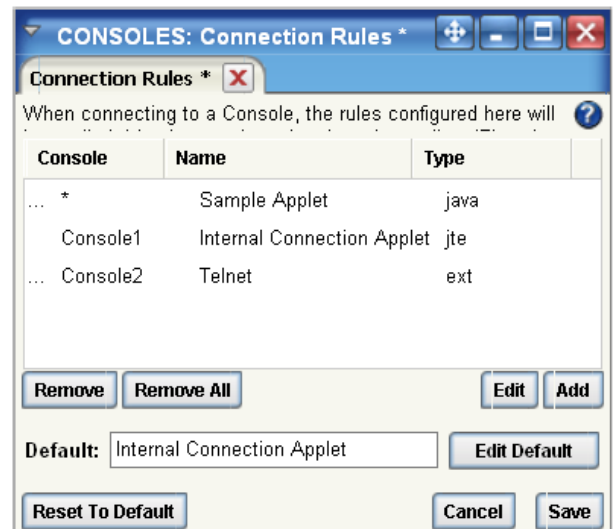
By default, ConsoleWorks connects to managed assets through its built-in Java terminal emulator. To have ConsoleWorks connect through xterm, you need to change this connection setting.

**Note:** Changes made to connection settings apply to the current User account—and anyone sharing this User's login (username and password)—and client node.

### To change connection settings to xterm

1. On the ConsoleWorks menu, click **Consoles > Connection Rules**.

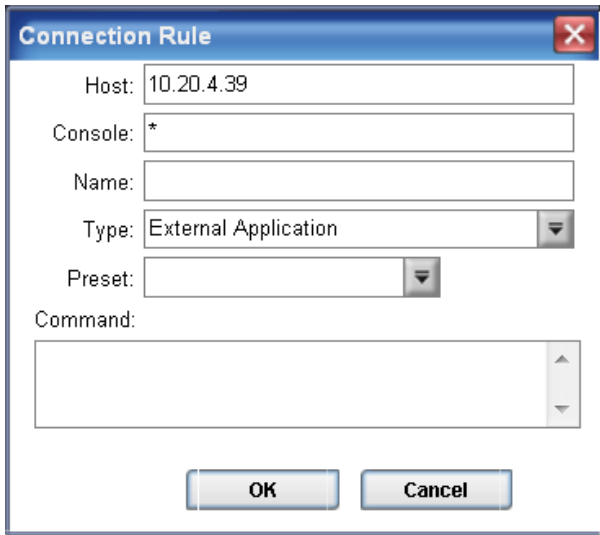
*The Connection Rules page appears.*





2. Click **Add**.

*The Connection Rule box appears.*



3. In the Host box, do one of the following:
  - Accept the default.
  - Enter the client IP address you want this rule to apply to.
  - To apply the rule to all IP addresses, clear the Host box.
  - To apply the rule to all the machines on the network or in the subnet, enter those network or subnet strings in the Host box.
4. In the Console box, accept the default or enter the name of the Console to which you want to connect.
5. In the Name box, enter a name for the rule, or leave it blank and it automatically fills with information that corresponds to your selection on the Type drop-down list.
6. On the Type drop-down list, select **X-Applet Helper**.
7. Click **OK**.

*The rule appears on the Connection Rules page.*

8. Click **Save**.

## CONFIGURING BROWSERS TO USE XTERM

This section provides information about configuring the Mozilla® Firefox® browser to use xterm on the UNIX® platform.

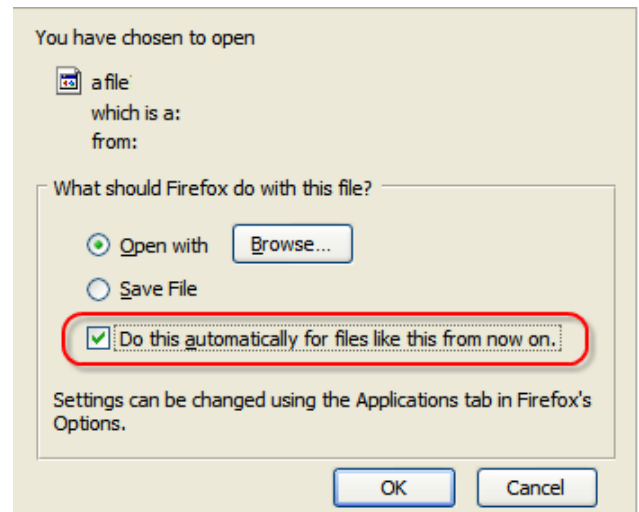
### To configure Firefox 3.6.16 for UNIX

1. On the ConsoleWorks main menu, click **Consoles > View**.

*The View Consoles page appears.*

2. Right-click a Console, and then click **Connect**.

*A Firefox dialog box appears.*



3. On the dialog box, click **Open with**, and then click **Browse**.
4. On the Choose Helper Application box, locate and click the following file that corresponds to your platform:
  - Linux -  
/opt/ConsoleWorks/samples/call\_cwterm.sh
  - Solaris -  
/opt/TDIconwrks/samples/call\_cwterm.sh
- Note:** Firefox is not supported for OpenVMS.
5. Select **Do this automatically for files like this from now on**.
6. Click **OK**.

*The Console connects and the terminal emulator window opens.*

© 2011 TDi Technologies, Inc. The information in this document is provided by TDi Technologies, Inc. as-is without warranty of any kind and is subject to change without notice. The warranties for TDi Technologies, Inc. solutions are set forth in the limited warranty statements accompanying such solutions. Nothing herein shall be construed as constituting an additional warranty. All products or company names mentioned in this document are trademarks or registered trademarks of their respective owners. Portions of the technology within the ConsoleWorks server are protected under US Patent number 6,505,245. ConsoleWorks is a registered trademark of TDi Technologies, Inc.