

Using Third-Party Terminal Emulators

ConsoleWorks and Third-Party Terminal Emulators

ConsoleWorks ships with a built-in terminal emulator for connecting to Consoles, but it can also use many third-party terminal emulators, such as KEA!®, PowerTerm®, and Reflection®. To use these emulator applications, just configure and run the ConsoleWorks Telnet Proxy (CWTProx).

CWTProx enables users on client workstations running Microsoft® Windows 2000® and Windows XP® to use their choice of terminal emulator to connect to Consoles defined within ConsoleWorks.

Note: For information about using xterm on HP® OpenVMS® and UNIX® platforms, refer to *Configuring ConsoleWorks to Use xterm*. To obtain a copy of this technical note, contact Customer Care (support@tditx.com).

Getting Started

Getting started using CWTProx involves the following three tasks:

1. Installing CWTProx.
2. Configuring the ConsoleWorks server connection.
3. Configuring CWTProx to use your choice of terminal emulators.

Note: You only need to perform these tasks once. After CWTProx is installed and configured, it automatically runs the specified terminal emulator each time you connect to a Console.

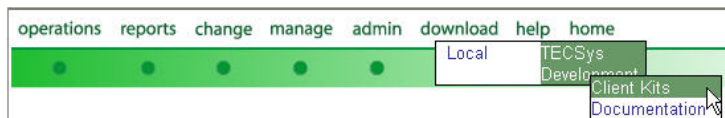
This document describes the steps for carrying-out these tasks. By following these steps, you can be connecting to Consoles through CWTProx in about five minutes.

Installing CWTProx

If your local workstation, the workstation on which you'll run CWTProx, is the ConsoleWorks server, then CWTProx was installed as part of the default ConsoleWorks server installation. If your local workstation is not the ConsoleWorks server, perform the following steps on your local workstation.

To install CWTProx

1. On the ConsoleWorks main menu, click **download > TECSys Development > Client Kits**.



The Customer Downloads page appears.

Alternatively, you can go to www.tditx.com and, on the main menu, point to **Customer Care > Downloads**, and then click **Client Kits**.



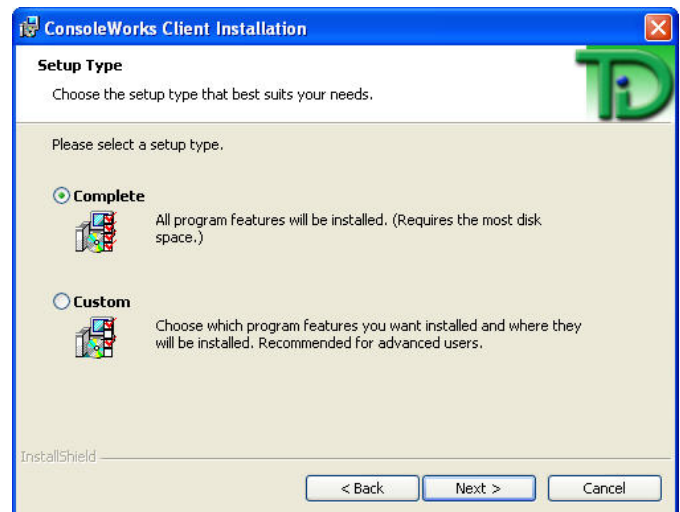
2. On the Customer Downloads page, locate the section for Windows 2000, and click on either the link for the ConsoleWorks client kit or the ConsoleWorks SSL client kit.

A dialog box for downloading the client kit appears.

3. Download and run the ConsoleWorks client kit (.exe).
The ConsoleWorks Client Installation wizard appears.
4. On the ConsoleWorks Client Installation wizard, click **Next**.

Note: To return to a previous page of the wizard, click **Back**. To cancel the installation, click **Cancel**.

5. On the License Agreement page, click **I accept the terms in the license agreement**, and click **Next**.
6. (optional) On the Customer Information page, type your user name and your organization's name in the corresponding boxes, and click **Next**.
7. On the Select Type page, complete one of the following tasks:
 - Click **Complete**, and then click **Next**.
 - Click **Custom**, click **Next**, ensure CWTProx is selected, clear **CWTerm**, and then click **Next**.



- On the Ready to Install the Program page, click **Install**.
The installation wizard installs the ConsoleWorks Client.
- On the Installation Completed page, click **Finish**.

Configuring Server Connections

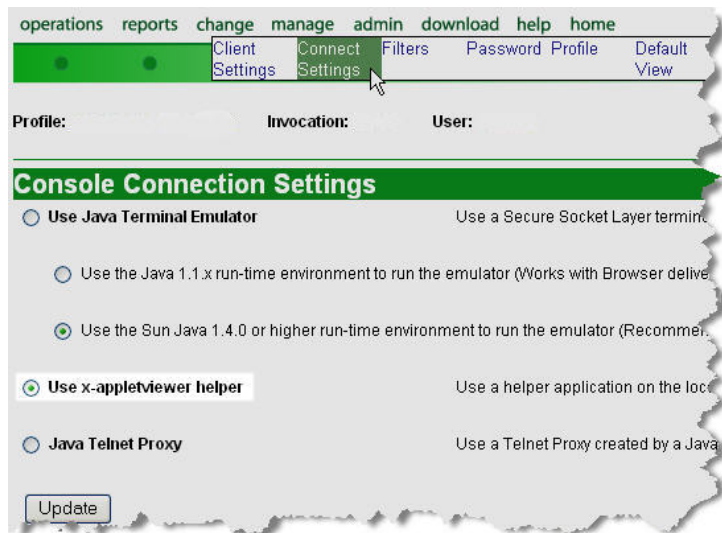
By default, ConsoleWorks connects to Consoles through its built-in Java terminal emulator. To have ConsoleWorks connect through your local terminal emulator, you need to change this connection setting.




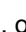
Note: Changes made to connection settings apply to the current user and anyone sharing this user's login (username/password pair).

After you save the changes, you can connect using your local terminal emulator.

To connect using the local terminal emulator

- On the ConsoleWorks main menu, click **change > Connect Settings**.
The Console Connection Settings page appears.



- On the Console Connection Settings page, click **Use x-appletviewer helper**, and then click **Update**.
The Console Connection Settings page displays the change.
- On the ConsoleWorks main menu, click **operations > Consoles**.
The Show Consoles page appears.
- On the Show Consoles page, under the Console heading, click the connection icons (, , , or ) beside the name of the Console to which you want to connect.
A dialog box for downloading the .xap file appears.
- Download and run the x-appletviewer helper (.xap).
The Pick Application dialog box appears.

Tip: Use the Pick Application dialog box to configure CWTPProx to use terminal emulators to connect to Consoles. The next section contains details on configuring CWTPProx.

Configuring CWTPProx

For your convenience, CWTPProx comes equipped with configurations for many industry-standard terminal emulators. You can use one of these well-known emulators to connect to Consoles, or you can configure CWTPProx to use the emulator of your choice.

Configuring the (Default) Connection

CWTPProx employs a default configuration to connect to Consoles that lack a connection configuration of their own. The default connection, named (Default), is configured to use Windows Telnet.

After the initial installation of CWTPProx, complete one of the following tasks:

- Accept the (Default) configuration as is by clicking **OK** on the Pick Application dialog box.
- Configure a new (Default) connection. The next section contains details on configuring a connection.

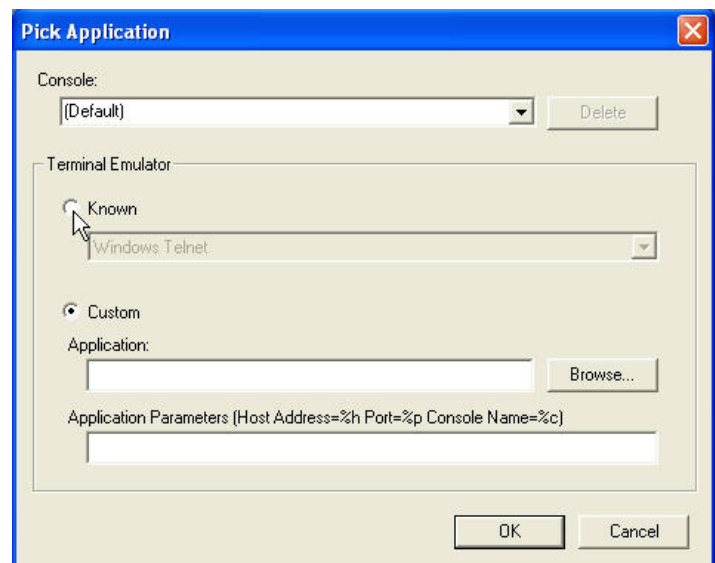
Completing this task stops the Pick Application dialog box from opening every time you use CWTPProx.

Tip: Configure (Default) to match the connection configuration you use most often. For example, if you typically connect to Consoles at your site through Reflection, then configure (Default) to use Reflection. This strategy saves you from having to repeatedly reconfigure your connection as you add and drop connections to these Consoles.

To configure the terminal emulator connection

On the Pick Application dialog box, perform the following steps:

- In the Console text box, enter the name of the Console to which you want to connect.



Note: ConsoleWorks saves the configuration under the name entered in the Console text box. CWTPProx applies this configuration to any Console with this name across all ConsoleWorks invocations.

2. In the Terminal Emulator group, choose the terminal emulator you want to use.
 - To use an already-configured terminal emulator, click **Known**, and select the emulator from the drop-down list.
 - To customize the configuration for a terminal emulator, click **Custom**.
 - In the Application text box, type the full path to the emulator or use the **Browse** feature.
 - In the Application Parameters text box, type the configuration parameters for the emulator. Ensure you put a space between parameters. ConsoleWorks sends these parameters to the terminal emulator when the emulator starts:




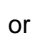
Tip: Use the same variables in the same syntax for the parameters that you use to start the terminal emulator from a command line.

3. Click **OK**.

The specified terminal emulator window appears. The ConsoleWorks Telnet Proxy status window opens minimized. Other emulator-specific windows may open (some may open minimized).

Tip: If the terminal emulator window fails to open, review the ConsoleWorks Telnet Proxy status window for information. Locate this window minimized on the Windows taskbar.

To Change a Connection Configuration

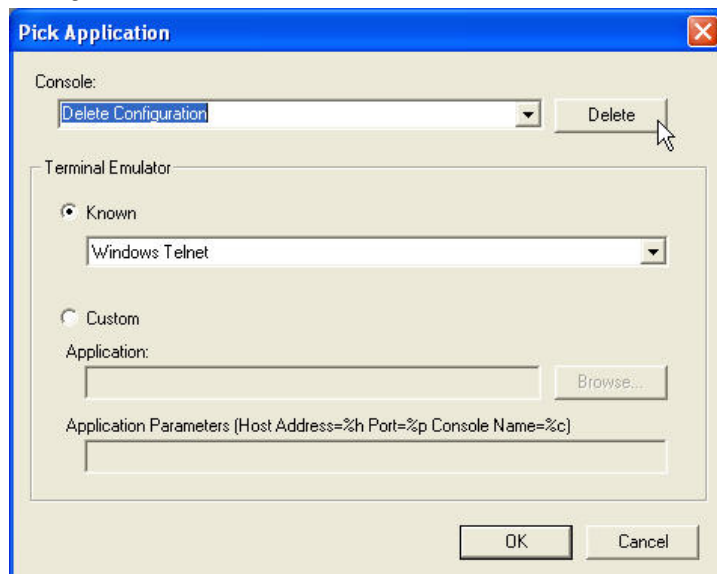
1. On the ConsoleWorks main menu, click **operations > Consoles**.
The Show Consoles page appears.
2. Under the Console heading, click the connection icons (, , , or ) beside the name of the Console whose connection configuration you want to change.
The ConsoleWorks Telnet Proxy status window opens minimized.
3. On the Windows taskbar, right-click the ConsoleWorks Telnet Proxy status window, and then click **Pick Application**.
4. On the Pick Application dialog box, change the configuration information, and click **OK**.

Tip: The Console drop-down list displays the names of any Console with a configured CWTPprox connection to the local workstation.

To Delete a Connection Configuration

1. On the Pick Application dialog box, in Console, enter the name of the Console configuration that you want to delete or select it from the drop-down list.
2. Click **Delete**.

Note: You cannot delete the (Default) connection configuration.



Additional Information

For additional product information or to receive a free, live ConsoleWorks demonstration, please call 1.800.695.1258 or visit our web site at www.tditx.com.